



NEW ZEALAND

# PRODUCT SELECTION GUIDE



Built for comfort, made for work.

### Ankle Boots



- Argyle**  
312102  
Page 16
- Argyle Bump**  
332102  
Page 16
- Argyle Bump**  
342102  
Page 17
- Argyle Zip**  
312152  
Page 18
- Argyle Zip Bump**  
332152  
Page 18
- Argyle Zip Met Bump**  
382852  
Page 19

### Ankle Boots



- Southern Cross® Zip Scuff**  
312661  
Page 21
- Southern Cross® Zip Scuff**  
312661  
Page 21
- Hobart**  
312101  
Page 22
- Hobart Bump**  
332101  
Page 23
- Torquay Zip EH**  
827539  
Page 24

### Mid-Cut Boots



- Parkes Zip Scuff**  
312658  
Page 25
- Whyalla**  
312108  
Page 26
- Wagga**  
312207  
Page 26

### High-Leg Boots



- Heeler**  
322315  
Page 27



Steel Blue stands behind the comfort and quality of our work boots with our 30-Day 100% Comfort Guarantee.

**PLUS 6 month manufacturer's warranty\*.**

That's how confident we are that we have the right work boots for you.

\* Terms & conditions apply

### Shoes



- Adelaide**  
311400  
Page 28
- Perth**  
311403  
Page 28
- Eucla**  
312126  
Page 29
- Manly**  
316109  
Page 29

Endorsed by:



Steel Blue is the first (and only) Aussie safety boot manufacturer that's been endorsed by the **Australian Physiotherapy Association (APA).**

### Ladies Boots



- Argyle Ladies**  
512702  
Page 31
- Southern Cross® Zip Ladies**  
512761  
Page 32
- Southern Cross® Zip Scuff**  
512719  
Page 32
- Hobart Ladies**  
512701  
Page 33
- Parkes Zip Ladies**  
512758  
Page 33

## Premium Leather



All Steel Blue boots are made from premium, high quality leather that's ethically and environmentally sourced from members of the Leather Working Group (LWG), with leathers predominately sourced in New Zealand.

All Steel Blue safety boots are independently certified to major international safety standards.

- ✓ Australian/New Zealand Standard **AS/NZS 2210.3**
- ✓ American Standard **ASTM F2413**
- ✓ European Standard **EN ISO 20345**

For more information, visit our website

[www.steelblue.com](http://www.steelblue.com)

# A Look Behind The Brand

In 1995, having spent 15 years working together in the safety boot industry, five men had a vision to do things differently and create premium safety boots that offered value for money with superior underfoot comfort.

- Steel Blue have been **manufacturing and supplying** safety footwear to the Australian market since 1995.
- From humble beginnings Steel Blue has gone on to become a major safety boot manufacturer, with **distribution across the globe**.
- Steel Blue now have **5 warehouses globally** – Australia, New Zealand, Amsterdam (servicing Europe, UK, Middle East), and Dallas, TX (USA).
- A **global team** provides support across Manufacturing, Product Development and Innovation, Marketing, and Sales.
- Steel Blue New Zealand backed by the Australian parent company, to **scale New Zealand growth**.
- **FDRA accredited** (Footwear Distributors & Retailers of America).
- Endorsed by the **Australian Physiotherapy Association (APA)**.
- Steel Blue **Mission**: To create the most comfortable occupational footwear in the world.

## Our Innovative Approach

We understand that your work boots are more than just footwear.

They're protection. They're stability for slippery or uneven surfaces. They're a tool for guiding objects into place and extra leverage for lifting heavier things.

That's why we have a whole team dedicated to researching and developing new technology, so you're even safer and more comfortable, with work boots that go the distance.

As leaders in safety boots, our team of innovators continuously strive to improve and add to our range.



To view our Boot Technology video suite, visit [www.steelblue.com](http://www.steelblue.com)

## A Company of Firsts

We're known for our innovative thinking, and are proud to deliver the most comfortable, most durable work boots.

Steel Blue was the first Australian safety boot manufacturer to:

- Develop our Trisole® Comfort Technology, a multi-layer sole with extremely effective cushioning and shock absorption.
- Use PORON® in our Trisole® Comfort Technology, which is now the benchmark for safety boots.
- Earn European Safety Footwear Certification CE EN ISO 20345 and USA Safety Footwear Certification ASTM F2413.
- Offer a 30-Day 100% Comfort Guarantee on all Steel Blue boots.
- Dedicate a range of boots to raise money for local & national charities.
- Become endorsed by the Australian Physiotherapy Association (APA).
- Utilise a Composite Toe Cap, which is airport-friendly and more lightweight than standard safety toe caps.
- Work with a leading manufacturer to design industrial grade zips for our zip-sided boots, for tradies who go in and out of houses all day.
- Use anti-chaff lining.

Built for comfort, **made for work.**

Footwear Distributors & Retailers of America (FDRA)



### Fair Trading and Ethical Sourcing

We believe our collaborative approach to ethical sourcing with all of the stakeholders within our supply chain will deliver the most benefits. We comply with the FDRA Code of Conduct, demonstrate an absence of Zero Tolerance Issues and have received FDRA Responsible Factory Accreditation.

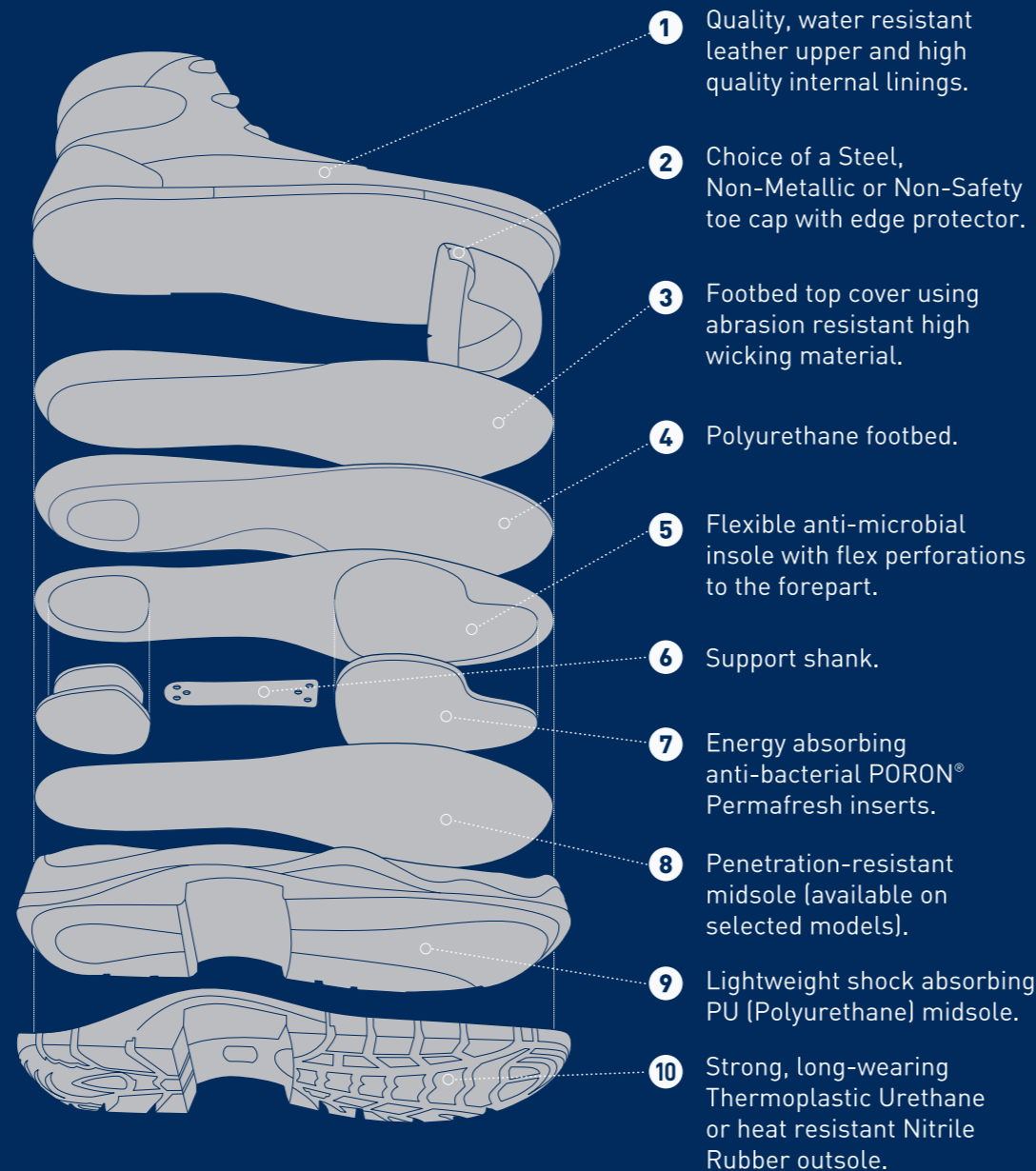
The dedicated Steel Blue facility is one of only 20 in the world to be an FDRA Responsible Factory Accredited Manufacturing Plant.

# Trisole® Comfort Technology

Cushion your feet, knees, hips and lower back from day-to-day fatigue with Steel Blue's unique soling system.

This provides a vital foundation that supports your whole body. Strategically placed pads made of high-tech PORON® are placed in the sole and under your foot's peak stress areas. This multi-density soling has been proven as much more effective in cushioning and absorbing shock than a standard footbed.

When you wear your Steel Blue boots, you know you've got the best available foot technology that's backed by our 100% Comfort Guarantee.



- 1 Quality, water resistant leather upper and high quality internal linings.
- 2 Choice of a Steel, Non-Metallic or Non-Safety toe cap with edge protector.
- 3 Footbed top cover using abrasion resistant high wicking material.
- 4 Polyurethane footbed.
- 5 Flexible anti-microbial insole with flex perforations to the forepart.
- 6 Support shank.
- 7 Energy absorbing anti-bacterial PORON® Permafresh inserts.
- 8 Penetration-resistant midsole (available on selected models).
- 9 Lightweight shock absorbing PU (Polyurethane) midsole.
- 10 Strong, long-wearing Thermoplastic Urethane or heat resistant Nitrile Rubber outsole.

Built for comfort, **made for work.**



## Steel Toe Cap

Made from hardened steel for premium toe protection.

Featuring a hardened steel toe cap that's designed to meet Australian/New Zealand safety standard AS/NZS 2210.3, this technology offers premium protection for your toes.

Our steel cap boots are capable of resisting a drop force of 200J, 15kN of rolling objects, nail gun puncture and power saw cut.

Steel cap boots are mandatory on many worksites, so they're our most popular choice. We test against corrosion, impact compression and internal dimensions to ensure the toe cap covers the necessary area.



## Composite Toe Cap

Non-metallic, electrically non-conductive toe protection.

Steel Blue's composite toe caps are entirely non-metallic, electrically non-conductive and lightweight. Our composite toe cap work boots are airport friendly and great for workers that need to move through security environments without any hassle.

As with our steel cap boots, they prevent injuries from falling objects at a drop force of 200J and are best suited to sites where there's a risk of toe damage from falling or rolling objects. Composite toe caps can be x-rayed, won't rust and also insulate against heat and cold.



## TPU Outsole

Our Thermoplastic Urethane (TPU) outsole is the all-rounder, suiting most work environments.

The main difference from the Nitrile outsole is that the TPU outsole is more lightweight and is heat resistant to 130°C.

Most of our work boots come standard with a TPU outsole. It's very durable, providing a high tolerance against cuts, abrasion, splitting and cracking, as well as a high resistance to most oils and chemicals. The TPU outsole also provides slip resistance for uneven and slippery surfaces.

If you don't need extreme heat protection, this is the lightweight outsole you need for your work boots.



## Nitrile Outsole

With heat resistance to 300°C, our Nitrile outsole is great for working in very hot conditions.

The Nitrile outsole is made from a type of higher heat resistant rubber and forms the outer layer of your work boots. At these high temperatures, there's a 60-second threshold before it reaches melting point.

With superior resistance to abrasion and excellent tear strength, the slip resistant capabilities of Steel Blue's Nitrile outsole actually improves with wear. It's also highly resistant to oil, mild acids and alkali.

As if that wasn't enough, the Nitrile outsole helps reduce the build-up of excess static electricity and is chemical resistant.



## Anti-Static

### For highly static environments.

Most Steel Blue boots are anti-static, meaning they dissipate the amount of static electricity build-up on your body. In fact, they actually conduct the static electricity through the soles and into the ground.

This offers a level of protection against ignition hazards such as flammable materials and gases.

If you work with flammable materials, ignitable gases, sensitive electronic equipment or in an environment that creates static electricity build-up (where you get 'zapped' from touching doors and machinery), you'll benefit from these Steel Blue boots.



## Electrical Hazard

### Added electric shock protection.

Our non-conductive footwear is designed as a supplemental form of protection to the wearer from hazardous step potential (the difference in electrical potential between the feet) while standing on the ground. These Steel Blue boots are clearly marked and have a distinct yellow colour plug in the rubber sole. This footwear is not suitable where anti-static properties are needed.

*Note: Electrical Hazard footwear is to be used in conjunction with primary protective equipment in areas and environments where there is a need to reduce the risk of electric shock due to accidental contact with live electric wires. EH safety shoes should not be used as the primary source of protection in an electrical hazard environment. A variety of methods such as maintaining appropriate distances, use of isolation methods, use of grounding methods for step voltage control, etc. should be considered to provide protection.*



## Water Resistant

### Extending the life of your boots.

All Steel Blue boots feature waterproof soles and premium quality water resistant leather. This reduces foot odour and bacteria while also extending the life of your work boots.

The leather we use for our work boots is treated all the way through the tanning process so it becomes water resistant. This means it repels water from the surface.

If you work on a site with light exposure to water and wet environments, our water resistant work boots are for you.

# Safety Standards

### Our safety boots comply with:

- Australian/New Zealand Safety Footwear Standard **AS/NZS 2210.3.**
- International and European Safety Footwear Certification **EN ISO 20345.**
- American Safety Footwear Certification **ASTM F2413.**

Steel Blue's non-safety work boots also comply with Australian /New Zealand Safety Footwear Standard AS/NZS 2210.5, International and European Safety Footwear Certification EN ISO 20347, and American Safety Footwear Certification ASTM F2892.

# Superior Impact Protection

**Our Met-Guard, or Metatarsal Guard, is BUILT INTO THE BOOT and specially designed to protect the metatarsal area of the foot that extends from the toes.**

The Met-Guard provides superior impact protection and reduces the risk of injury from impact to this part of the foot – without compromising on our complete level of 100% Comfort every day.

This is a popular choice for mining workers, factory hands and drillers, who sometimes need the extra protection the Met-Guard affords.

**Maximum flexibility**

**Superior Impact Protection**

Without compromising on our 100% comfort.

**Supports natural movement of the foot**

**Shock Absorbent**

**Capable of withstanding the heaviest of drops**

Meets CE Standards of 101.7 joules impact, creating a shield to reduce and absorb an impact of 20kg from 0.5 metres in the metatarsal area.

**Revolutionary Design**

Built into the boot (non-visible) – therefore less likely to cause trips.

**Protective Steel Toe Cap**

Meets CE standards of 200 joules impact, creating a shield to reduce and absorb an impact of 20kg from 1 metre.



### DO YOU NEED EXTRA PROTECTION?

See the **Argyle Zip Bump Met** on Page 19.

# Premium Leather

All Steel Blue boots are made from premium, high quality leather that's ethically and environmentally sourced from members of the Leather Working Group (LWG), with leathers predominately sourced in New Zealand.

Steel Blue's durable, yet supple cowhide leather assists with less break-in time, making our work boots comfortable from day one.

Each leather is specifically chosen to ensure each style of boot is fit for purpose.

Steel Blue's range of durable cowhide leather includes:

## Full-Grain

A high-quality cowhide leather with a waxy finish.

## Nubuck

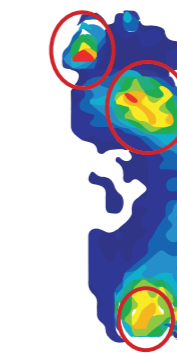
Sanded or buffed into a velvet-like finish while being stronger than suede.

Built for comfort, made for work.

# The PORON® Advantage

We use PORON® in our Trisole® Comfort Technology, which is now the benchmark for safety boots.

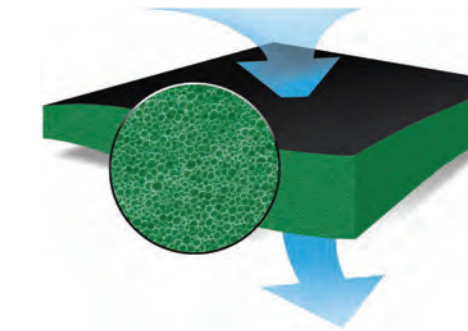
Trisole® Comfort Technology works by strategically placing pads, made of the high-tech material PORON®, in the sole and under the peak stress areas of the foot. The unique open-cell structure of PORON® cushioning helps retain its 'like-new' performance, softness and flexibility.



Standard Insole

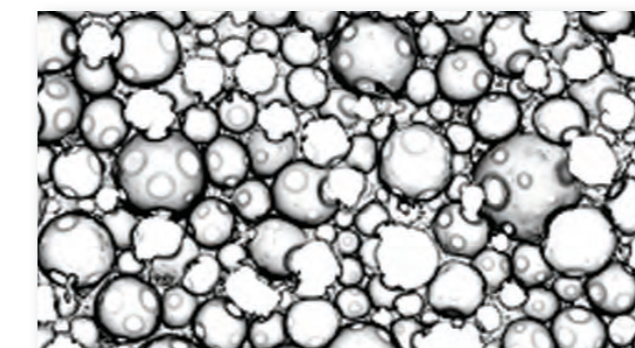


PORON® Cushioning Insole

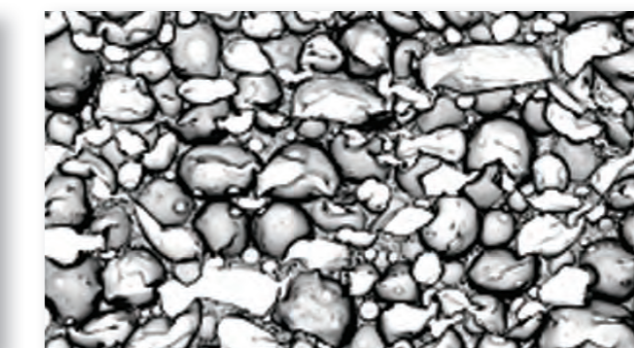


PORON® Breathability

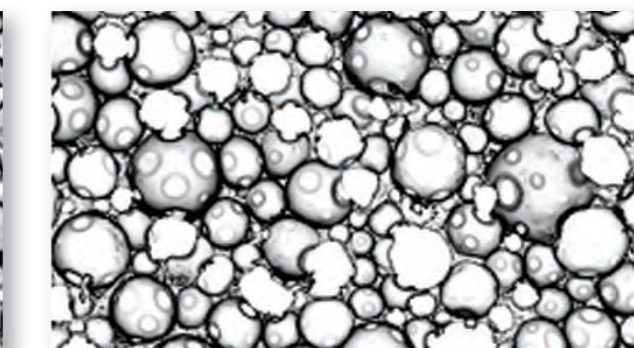
Red and Dark Yellow areas on the foot scan indicate elevated pressure points.



Open cell structure of PORON® materials before compression



PORON® materials during compression



Open cell structure of PORON® materials after compression

The PORON® Advantage

## Outsole



### TPU

Our standard durable outsole with heat resistance to 130°C.



### Nitrile

Superior resistance to abrasion and heat resistance to 300°C.

## Conductivity



### Anti-Static

Prevents the build-up of static electricity within your body by dissipating it through the sole.



### Electrical Hazard

Non-conductive, offering secondary protection for accidental contact with live electrical currents.

## Resistance



### Water Resistant

A special tanning process means all Steel Blue boots are water resistant.



### Penetration Resistant

An extra tough steel or composite midsole prevents sharp objects getting through to your foot.



### Metatarsal Guard

Steel Blue's Met-Guard offers composite plated protection for your foot's metatarsal area.

## Toe Cap



### Steel Toe Cap

Made from hardened steel for premium toe protection.



### Composite Toe Cap

Non-metallic, electrically non-conductive toe protection.



### Non-Safety

When toe protection isn't required, our non-safety boots are a lightweight alternative.



### Bump Cap

A hardy, polyurethane cap that's directly moulded as part of the midsole.



### Scuff Cap

An abrasion resistant, streamlined toe cover that protects more of the boot.



### Scuff Guard

Additional protection for the toe area.

## Style



### Lace Up

A classic fastening for snug, well-fitting work boots.



### Pull On

Convenient, easy access work boots with an elastic side.



### Zip-Sided

Lace-up for comfort, then use the side zips for quick access.

## Material



### Premium Leather

All Steel Blue boots are made from premium, high quality leather that's ethically and environmentally sourced from members of the Leather Working Group (LWG), with leathers predominately sourced in New Zealand.

# Boot Technology

As a leader in safety boots, we strive to stay at the forefront of innovative technology to give you premium comfort, durability and safety.

Because good work boots mean being able to get the job done.



# Better Body Health

We all know that our feet help us get from A to B, but with every step they're also absorbing up to twice your bodyweight in force.

Any issues with your feet can throw your entire body out of alignment, causing pain and discomfort.

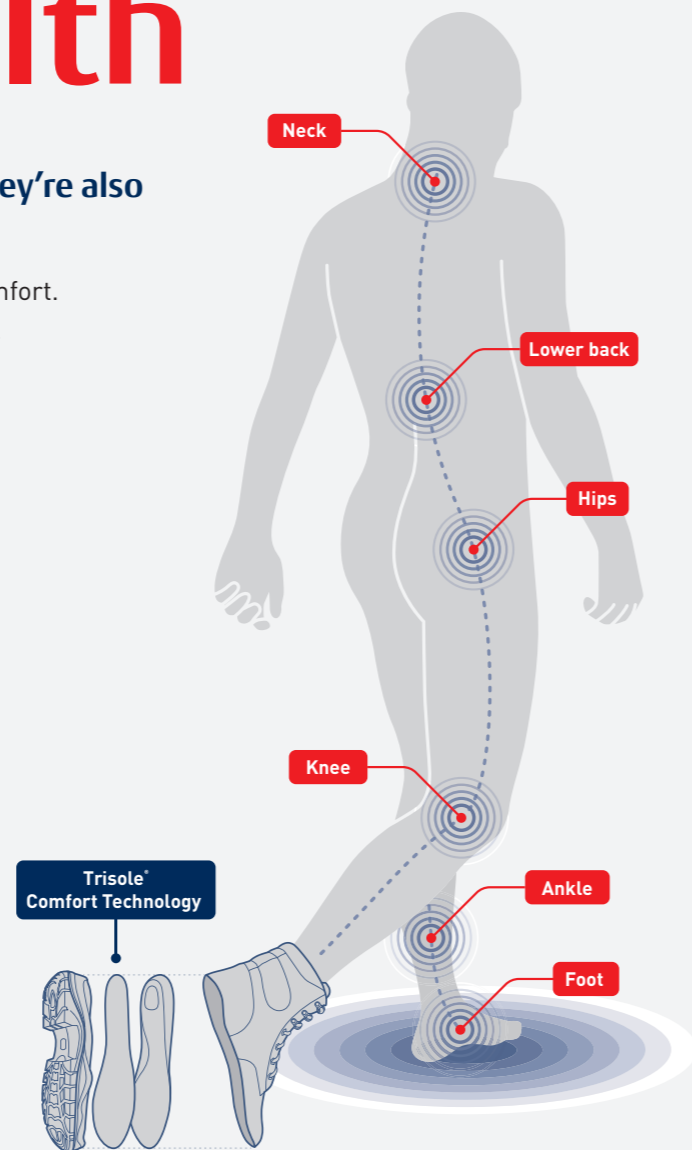
That's why having supportive, comfortable, fit-for-purpose work boots is so important for your overall wellbeing. Happier feet mean less body fatigue and more productivity.

Steel Blue has developed our unique range of comfortable, lightweight premium work boots so you can enjoy better body health.

When you wear Steel Blue boots, you'll experience:

- ✓ **Less shock forces**  
To your feet, knees, hips and lower back.
- ✓ **More flexibility in the sole**  
Thanks to hi-tech materials.
- ✓ **The feeling of lightweight work boots**  
That are durable and fit-for-purpose.
- ✓ **Less stress-related injuries**  
To the feet, ankles, knees, hips and lower back.
- ✓ **Greater comfort and overall wellbeing**  
So you can focus on getting the job done.

Go to Page 6 to read about our Trisole® Comfort Technology.



# Endorsed by the APA

Steel Blue is also the first (and only) Aussie safety boot manufacturer that's been endorsed by the Australian Physiotherapy Association (APA).

The APA only supports products that offer clear benefits for physiotherapy patients. With Steel Blue's strong focus on comfort and durability, the APA's endorsement recognises the technological advancements of our work boots that help protect the wearer from stress-related injuries to the ankles, knees, hips and spine.

Endorsed by:



Built for comfort, made for work.

# 30-Day 100% Comfort Guarantee

We stand behind the comfort and quality of our work boots with our 30-Day 100% Comfort Guarantee.

We were the first safety footwear manufacturer in the world that offered such a rock solid promise. That's how confident we are that Steel Blue has the right work boots for you.

For more information, visit [www.steelblue.com](http://www.steelblue.com)





# Argyle 312102

The Argyle is a 150mm men's derby style, lace-up ankle boot with padded collar and tongue.

A popular, 100% comfortable choice for Bricklayers, Glaziers and Sand Blasters with a TPU outsole heat resistant to 130°C and a 200 joule safety steel toe cap.

The Argyle has anti-static properties and premium water resistant leather available in black.



## Colours Sizes



Black

4 - 16 | Full Sizes

### 312102



Anti-Static



Water Resistant



Steel Toe Cap



TPU Outsole



Lace Up



Premium Leather

#### STANDARD ARGYLE FEATURES

### 332102



#### STANDARD FEATURES



#### ADDITIONAL FEATURES



TPU Outsole

#### Sizes

5 - 14 | Full

Built for comfort, made for work.

# Argyle Bump

## 342102

The Argyle Bump is a 150mm men's derby style, lace-up ankle boot with padded collar and tongue, plus a bump cap to increase the longevity of your work boots.

A popular, 100% comfortable choice for Bricklayers, Glaziers and Sand Blasters with a TPU outsole heat resistant to 130°C and a 200 joule safety steel toe cap.

The Argyle Bump has anti-static properties and premium water resistant leather available in black.



## Colours Sizes



Black

5 - 14 | Full Sizes

5.5 - 13.5 | Half Sizes

### 342102



Anti-Static



Water Resistant



Steel Toe Cap



Bump Cap



Nitrile Outsole



Lace Up



Premium Leather

#### STANDARD ARGYLE BUMP FEATURES

# Argyle Zip 312152

One of our most popular styles, the Argyle Zip features an industrial grade side zip for ease of access.

Including laces to ensure a secure and comfortable fit, the Argyle Zip is a popular choice for Tilers, Doc Workers, Plumbers, Warehouse Staff and Couriers.



Crafted from premium water resistant leather, this derby style 150mm work boot includes anti-static properties with a TPU outsole heat resistant to 130°C and a 200 joule safety steel toe cap.

The Argyle Zip is available in black premium water resistant leather.

## Colours



Black

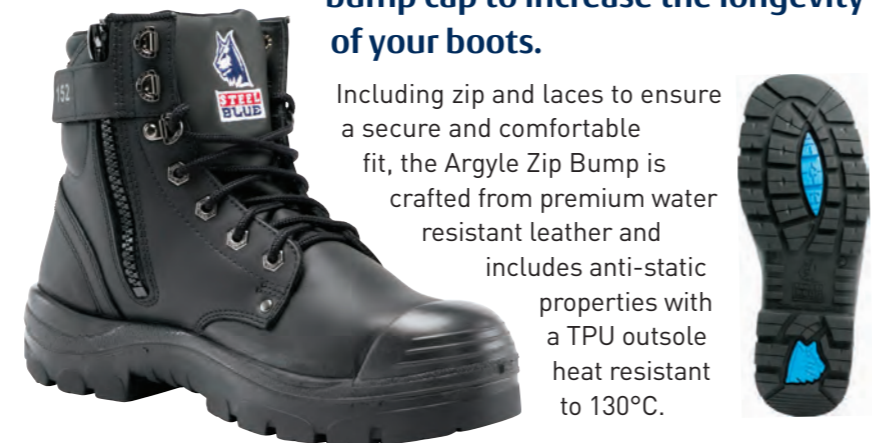
## Sizes

4 - 14 | Full Sizes



# Argyle Zip Bump 332152

The Argyle Zip Bump features a hardy, polyurethane bump cap to increase the longevity of your boots.



Including zip and laces to ensure a secure and comfortable fit, the Argyle Zip Bump is crafted from premium water resistant leather and includes anti-static properties with a TPU outsole heat resistant to 130°C.

## Colours



Black

## Sizes

5 - 14 | Full Sizes



# Argyle Zip Met 382852

The Argyle Zip Met boasts all the features of our popular Argyle Zip boot with an added bump cap, penetration resistant midsole and metatarsal guard for all round foot protection.



Including laces to ensure a secure and comfortable fit, the Argyle Zip Met is a popular choice for Scaffolders, Factory Hands and Drillers.

## Colours



Black

## Sizes

5 - 14 | Full Sizes





Built for comfort, **made for work.**

# Southern Cross® Zip Scuff 312661

Colours



Black



Sand

Sizes

5 - 14 | Full Sizes

One of our most popular styles, the Southern Cross® Zip Scuff features an industrial grade side zip for ease of access.

Including laces to ensure a secure and comfortable fit, the Southern Cross® Zip Scuff is a popular choice for Construction, Warehouse, Fabricators and Indoor Trades.

Crafted from premium water resistant leather, this work boot includes anti-static properties with a TPU outsole heat resistant to 130°C, a 200 joule safety steel toe cap and a new look scuff cap for long lasting boot protection.

The Southern Cross® Zip Scuff is available in black full grain leather and sand nubuck leather.



312661



Anti-Static



Water Resistant



Steel Toe Cap



Scuff Cap



TPU Outsole



Zip Sided



Lace Up



Premium Leather

STANDARD SOUTHERN CROSS® ZIP SCUFF FEATURES

# Hobart 312101

The Hobart is a 145mm men's elastic-sided pull-on ankle boot.

A popular, 100% comfortable choice for Landscapers, Roof Tilers and Scaffolders with a TPU outsole heat resistant to 130°C and a 200 joule safety steel toe cap.

The Hobart has anti-static properties and premium water resistant leather available in black.



## Colours



Black

## Sizes

4 - 16 | Full Sizes

312101



Anti-Static



Water Resistant



Steel Toe Cap



TPU Outsole



Pull On



Premium Leather

STANDARD HOBART FEATURES

# Hobart Bump 332101

332101

The Hobart Bump is a 145mm men's elastic-sided pull-on ankle boot with a bump cap to increase the longevity of your boots.

A popular, 100% comfortable choice for Landscapers, Roof Tilers and Scaffolders with a TPU outsole heat resistant to 130°C and a 200 joule safety steel toe cap.



The Hobart Bump has anti-static properties and premium water resistant leather available in black.

## Colours



Black

## Sizes

5 - 14 | Full Sizes

5.5 - 13.5 | Half Sizes



Anti-Static



Water Resistant



Steel Toe Cap



Bump Cap



TPU Outsole



Pull On



Premium Leather



# Torquay Zip EH

827539

The Torquay Zip EH boasts innovative boot technology with a 200 joule safety composite toe cap and scuff guard for protection.

This men's 150mm derby, ankle lace-up style is a popular choice for Electricians, Refrigeration Mechanics and Power Operators. The stylish upper design features a scalloped collar for ease of movement and an industrial-grade zipper for easy on/off.

The Torquay Zip EH has a nitrile outsole heat resistant to 300 degrees, has electrical hazard properties and premium water resistant leather available in black.



Colours



Black

Sizes

5 - 14 | Full Sizes

827539



Electrical Hazard



Water Resistant



Composite Toe Cap



Scuff Guard



Nitrile Outsole



Zip Sided



Lace Up



Premium Leather

STANDARD TORQUAY ZIP EH FEATURES

Built for comfort, made for work.

# Parkes Zip Scuff

312658

The Parkes Zip Scuff is a men's 95mm hiker-style lace-up mid-cut boot with an industrial grade zipper and scuff cap to increase the longevity of your boots.

A popular choice for Warehouse Staff, Construction and Courier Drivers, the boot also features a heat resistant TPU outsole to 130°C, a 200 joule safety steel toe cap and premium water resistant leather available in black.



Colours



Black

Sizes

5 - 14 | Full Sizes

312658



Anti-Static



Water Resistant



Steel Toe Cap



Scuff Cap



TPU Outsole



Zip Sided



Lace Up



Premium Leather

STANDARD PARKES ZIP SCUFF FEATURES

# Whyalla 312108

The Whyalla is a 95mm men's derby style, lace-up mid-cut boot with padded collar and tongue.

A popular, 100% comfortable choice for Bricklayers, Glaziers and Sand Blasters with a TPU outsole heat resistant to 130°C and a 200 joule safety steel toe cap.

The Whyalla has anti-static properties and premium water resistant leather available in black.



### Colours



Black

### Sizes

5 - 14 | Full Sizes



# Wagga 312207

The Wagga is a 110mm men's hiker style, lace-up mid-cut boot with padded collar and tongue.

A popular, 100% comfortable choice for Warehouse Workers, Tour Operators and Road Workers with a TPU outsole heat resistant to 130°C and a 200 joule safety steel toe cap.

The Wagga has anti-static properties and premium water resistant leather available in charcoal.



### Colours



Charcoal

### Sizes

5 - 14 | Full Sizes



# Heeler 322315

The Heeler is a 250mm men's rigger style, pull-on boot.

A popular, 100% comfortable choice for Rig Workers, Refinery Workers and Mining with a nitrile outsole heat resistant to 300°C and a 200 joule safety steel toe cap.

The Heeler has anti-static properties and premium chemical, water resistant leather and is available in Redwood.



### Colours



Redwood

### Sizes

5 - 14 | Full Sizes

### 322315



Anti-Static



Water Resistant



Chemical Resistant



Steel Toe Cap



Nitrile Outsole



Pull On



Premium Leather

STANDARD HEELER FEATURES

# Adelaide 311400

The Adelaide boasts innovative boot technology with a 200 joule safety composite toe cap to leave metal detectors speechless.

This men's sports lace-up style shoe is a popular choice for Courier Drivers, Warehouse Workers and Stadium Crew. The Adelaide has a TPU outsole heat resistant to 130°C, has anti-static properties and is available in black.



## Colours



Black

## Sizes

4 - 13 | Full Sizes



Anti-Static



Water Resistant



Composite Toe Cap



TPU Outsole



Lace Up

# Perth 311403

The Perth boasts innovative boot technology with a 200 joule safety composite toe cap to leave metal detectors speechless.

This men's sports lace-up style shoe is a popular choice for Courier Drivers, Warehouse Workers and Stadium Crew. The Perth has a TPU outsole heat resistant to 130°C and has anti-static properties.



## Colours



Black

## Sizes

4 - 13 | Full Sizes



Anti-Static



Water Resistant



Composite Toe Cap



TPU Outsole



Lace Up

# Eucla 312126

Men's derby style, lace-up shoe.

200J steel toe cap and TPU outsole with heat resistance up to 130°C.



## Colours



Black

## Sizes

5 - 14 | Full Sizes



Anti-Static



Water Resistant



Steel Toe Cap



TPU Outsole



Lace Up



Premium Leather

# Manly 316109

Men's lace-up executive shoe.

200J steel toe cap and TPU outsole with heat resistance up to 130°C.



## Colours



Black

## Sizes

5 - 14 | Full Sizes



Anti-Static



Water Resistant



Steel Toe Cap



TPU Outsole



Lace Up



Premium Leather

Our ladies safety boots are designed just for women and include a shorter ankle-length and smaller in-step.



Built for comfort, **made for work.**

# Argyle Ladies

**512702**

The Argyle Ladies is a 140mm derby style, lace-up ankle boot with padded collar and tongue.

A popular 100% comfortable choice for Mining, Construction and Road Workers with a TPU outsole heat resistant to 130°C and a 200 joule safety steel toe cap.

The Argyle Ladies has anti-static properties and premium water resistant leather available in black and purple.



Colours



Black



Purple

Sizes

4 - 11 | Full Sizes

512702



Anti-Static



Water Resistant



Steel Toe Cap



TPU Outsole



Lace Up



Premium Leather

STANDARD ARGYLE LADIES FEATURES



# Southern Cross<sup>®</sup> Zip Ladies 512761

The Southern Cross<sup>®</sup> Ladies is a 150mm lace-up ankle boot with a low-cut scalloped, padded collar for ease of movement.

A popular choice for Warehouse Staff, Construction and Courier Drivers, the boot also features a TPU outsole heat resistant to 130°C, a 200 joule safety steel toe cap and premium water resistant leather available in nubuck.



### Colours



Pink Sand

### Sizes

4 - 11 | Full Sizes



# Southern Cross<sup>®</sup> Zip Scuff Ladies 512719

The Southern Cross<sup>®</sup> Zip Scuff Ladies features an abrasion resistant scuff cap for extra protection to the toe area of the boot.

Including zip and laces to ensure a secure and comfortable fit, the Southern Cross(R) Zip Scuff features a TPU outsole heat resistant to 130°C, a 200 joule safety steel toe cap and premium water resistant full-grain leather.



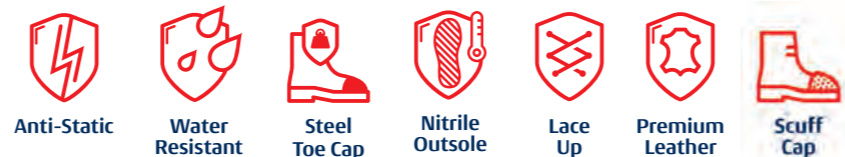
### Colours



Black

### Sizes

4 - 11 | Full Sizes



# Hobart Ladies 512701

The Hobart Ladies is a 145mm elastic-sided pull-on ankle boot.

A popular, 100% comfortable choice for Plumbers, Carpenters and Landscapers with a TPU outsole heat resistant to 130°C and a 200 joule safety steel toe cap.

The Hobart Ladies has anti-static properties and premium water resistant leather available in black.



### Colours



Black

### Sizes

4 - 11 | Full Sizes



# Parkes Zip Ladies 512758

The Parkes Zip Ladies is a 95mm hiker style lace up ankle boot with a side zip for convenience.

The Parkes Zip Ladies is a tough and durable work boot. Boasting a 200 joule steel toe cap, TPU outsole with heat resistance up to 130°C and a padded collar and tongue for extra comfort, the Ladies Parkes Zip is an all-rounder.



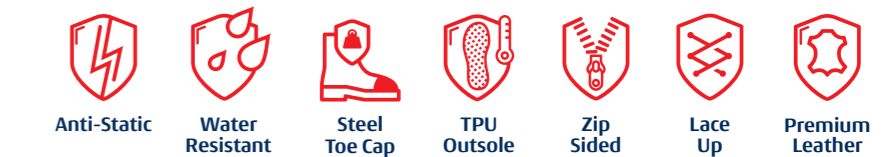
### Colours



Black

### Sizes

4 - 11 | Full Sizes



# Boot Accessories

Our exclusive range of 100% genuine parts and accessories, designed specifically to complement your Steel Blue work boots.

To view our full range of accessories, please visit our website:

[www.steelblue.com](http://www.steelblue.com)

## Bamboo Socks



Made from ultra-fine bamboo fabric, these socks are naturally anti-bacterial and eliminate foot odor. The eco-friendly bamboo materials offer anti-static properties, blister protection and all-day comfort.

4-6 | A-000074 6-10 | A-000076 11-14 | A-000080

## Ortho Rebound®



Designed to cushion, cradle and support the entire foot from heel to toe. Made from high quality polyurethane, it will not flatten out or compress with prolonged wear.

Sizes 3 - 16 A-000130 — A-000143

## Nylon Laces

Black



Made from a super-tough polyester/Cordura material, Steel Blue laces exceed industry standards for their tensile strength and anti-abrasive qualities. Choose from two colours to suit your specific safety boot.

110cm	A-000064
140cm	A-000065
160cm	A-000066

# Built for comfort, made for work.





## Steel Blue

**Head Office:** 18 Irvine Drive, Malaga, Western Australia 6090

**Email:** [info@steelblue.com](mailto:info@steelblue.com) **Phone:** 0800 777 460 **Fax:** 0800 777 462

[www.steelblue.com](http://www.steelblue.com)

 **Sign up to our newsletter:** [www.steelblue.com/nz/become-a-vip-member](http://www.steelblue.com/nz/become-a-vip-member)

 **Like us on Facebook:**  
[@SteelBlueNZ](https://www.facebook.com/SteelBlueNZ)

 **Follow us on Instagram:**  
[@SteelBlueBoots](https://www.instagram.com/SteelBlueBoots)

 **Follow us on LinkedIn:**  
[www.linkedin.com/company/steel-blue-boots](https://www.linkedin.com/company/steel-blue-boots)

For the full Terms and Conditions regarding the Steel Blue 100% Money Back Comfort Guarantee, and our 6 Month Manufacturer's Warranty, visit the Steel Blue website at [steelblue.com](http://steelblue.com).

© Copyright 2020 Footwear Industries Pty Ltd. All rights reserved. November 2020.

**Product range correct at time of publication and subject to change without prior notice.**

**Leather is a natural product and some variation in colour may occur.  
The product images in our brochures and website are a general indication of colour.  
These variations in no way affect the performance of the boot.**

IN OUR   
**STRIDE**

